

South County ARES



# A Tale of Two Aid Stations

It was the best of times... it was the .....



April 26 2026

Robert Lombaerde WB6WGM

Mark Reynolds K6ACY



# BSIM Assignments

Our assignment: Aid Station 6 Mile 14.7

| Name:                                  | Callsign:       | Position:                                 |
|--|-----------------|---|
| <b>MARATHON FLATS POSITIONS:</b>       |                 |   |
| Jeff Ackerman                          | KG6UYZ          | Marathon 1                                |
| Joe Prager                             | KG6NRI          | Marathon 2                                |
| Jeff Orr                               | KG6KCO          | Net Control 1                             |
| Jared Schwalb                          | KC3QLI          | Net Control 2                             |
| Dave Burbidge                          | W6IIQ           | Medical Tent                              |
| <b>ROVING POSITIONS:</b>               |                 |   |
| Doug Stickler (BSIM Official)          | KI6CQY          | Rover                                     |
| Nick Carswell                          | K6CQX           | Convoy 1                                  |
| Chance Freeman                         | KK6DEV          | Convoy 2                                  |
| Dan Rosa                               | KE6EWA          | Sweep                                     |
| Pete Noto                              | W6PAN           | SAG 1                                     |
| Marshall Moranda                       | KM6LAY          | SAG 2                                     |
| David Hitch                            | KO6AVA          | SAG 3                                     |
| Jeff Bates                             | KN6PAA          | SAG 4                                     |
| Sal Estevez                            | KO6IJJ          | SAG 5                                     |
| <b>MILE POSITIONS:</b>                 |                 |   |
| Dave Brown                             | WR6Z            | Aid Station 1 - Mile 2.5                  |
| Ian Wallace / Kayden Huffman           | KW6IAN / W1ACE  | Aid Station 2 - Mile 4.8 & 21 Miler Start |
| Jane Ely / Bill Witschko               | KN6LJA / K6JPN  | Aid Station 3 - Mile 7.8                  |
| David Hansen / Alan Casamajor          | KN6HFV / KM6BGG | Aid Station 4 - Mile 10.4                 |
| Mark Reynolds / Jared Apperson         | KN6SRN / W4DMB  | Aid Station 5 - Mile 12.2                 |
| Robert & Madeline Lombaerde            | WB6WGM & KD6JTU | Aid Station 6 - Mile 14.7                 |
| Ray Dzek / Glen Haimovitz              | N6DZK / AK6FM   | Aid Station 7 - Mile 16.9                 |
| Farhad Modarresi / Benjamin Faershtein | KO6HNG / KO6CNT | Aid Station 8 - Mile 19.0                 |
| Gary Goelkel / Sheila Adams-Sapper     | N6XN / K6GMG    | Aid Station 9 - Mile 21.2                 |
| Richard Ruh                            | KJ6KEW          | Aid Station 10 - Mile 23.0                |
| Luke Pasley                            | KO6BYG          | Aid Station 11 - Mile 24.5                |
| Brian Toohey                           | WB2EE           | Palo Colorado (Chief Goetz)               |
| Robert Evans                           | K6BIK           | Sag Drop Off - Palo Corona                |
| Cody Adams                             | W6KHZ           | Sag Drop Off - 15.2                       |
| Bertrand Achard                        | KN6YUY          | Sag Drop Off - 21.2                       |





# Frequency Plan

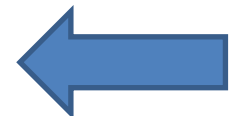
| INCIDENT RADIO COMMUNICATIONS PLAN |           |   | Incident Name                  |                |             | Date/Time Prepared |             |                | Operational Period Date/Time |  |
|------------------------------------|-----------|---|--------------------------------|----------------|-------------|--------------------|-------------|----------------|------------------------------|--|
|                                    |           |   | Big Sur International Marathon |                |             | 3/29/2026          |             |                | 4-26-25 - 0400 to 1500       |  |
| Ch #                               | Function  | Channel Name/Trunked Radio System Talkgroup | Assignment                     | RX Freq N or W | RX Tone/NAC | TX Freq N or W     | Tx Tone/NAC | Mode A, D or M | Remarks                      |  |
| 1                                  | Logistics | CH1-Big Sur                                 |                                | 147.30000      | 110.9       | 144.70000          | 110.9       | A              |                              |  |
| 2                                  | Logistics | CH1-Pt Sur                                  |                                | 146.91000      | CSQ         | 146.31000          | 110.9       | A              |                              |  |
| 3                                  | Logistics | CH1-Palo Colorado                           |                                | 442.60000      | 123.0       | 447.60000          | 123.0       | A              |                              |  |
| 4                                  | Logistics | CH1-Pebble                                  |                                | 442.75000      | 110.9       | 447.75000          | 110.9       | A              |                              |  |
| 5                                  | Logistics | CH1-Flats                                   |                                | 440.45000      | 110.9       | 445.45000          | 110.9       | A              |                              |  |
| 6                                  | Logistics | CH2-Pt Sur                                  |                                | 444.97500      | 110.9       | 449.97500          | 110.9       | A              |                              |  |
| 7                                  | Logistics | CH2-Pebble                                  |                                | 146.67000      | 94.8        | 146.07000          | 94.8        | A              |                              |  |
| 8                                  | Logistics | Simplex                                     |                                | 145.70000      | 162.2       | 145.70000          | 162.2       | A              |                              |  |



# Repeater Coverage

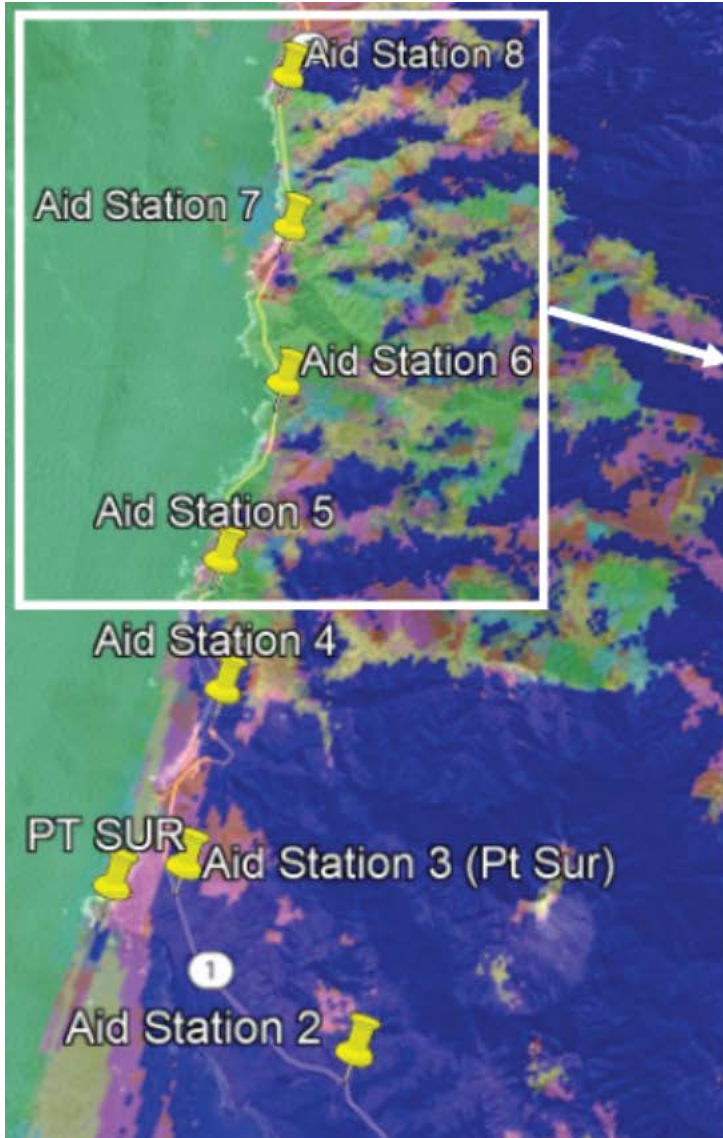
## CH1 / 2 Coverage Matrix

| Position:                | CH1 - Big Sur - 147.300 | CH1 - Pt Sur - 146.910                           | CH2 - Pt Sur - 444.975                       | CH1 - Palo Colorado - 442.600               | CH1 - Pebble - 442.750          | CH2 - Pebble                             | CH1 - Flats |
|--------------------------|-------------------------|--|--|---|---------------------------------|--|-------------|
| Start                    | Portable Coverage       | 80% Portable Coverage / High Power TX to get out | Portable Coverage                            |   |                                 |  |             |
| Aid Station 1            | Portable Coverage       | 80% Portable Coverage / High Power TX to get out | Portable Coverage                            |   |                                 |  |             |
| Aid Station 2 / 21 Miler |                         | Portable Coverage / High Power TX to get out     | Portable Coverage / High Power TX to get out |   |                                 |  |             |
| Aid Station 3            |                         | Portable Coverage                                | Portable Coverage                            |   |                                 |  |             |
| Aid Station 4            |                         | Portable Coverage                                | Portable Coverage                            |   |                                 |  |             |
| Aid Station 5            |                         | Mobile Only Coverage                             | Spotty Portable / Good Mobile Coverage       | Portable Coverage                           | Portable / Good Mobile Coverage | Portable Coverage / Good Mobile Coverage |             |
| Aid Station 6            |                         | Spotty Mobile / No Portable Coverage             | Spotty Portable / Good Mobile Coverage       | Portable Coverage                           | Portable Coverage               | No Portable / Spotty Mobile Coverage     |             |
| Aid Station 7            |                         | No Portable / Mobile only coverage               | Portable Coverage / High Power TX to get out | Portable Coverage with High Power TX on Hip |                                 |  |             |



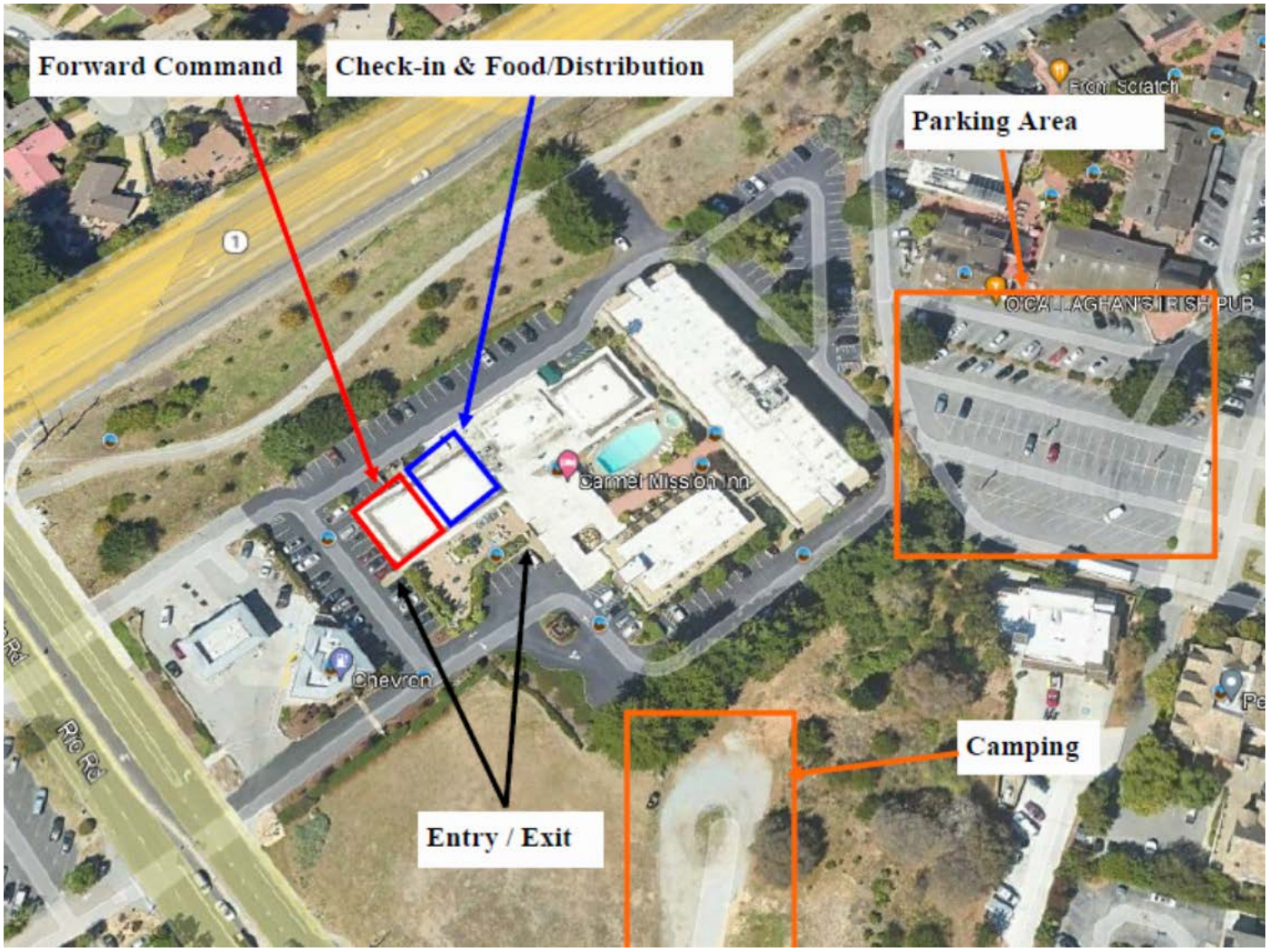
# CH1—PALO COLORADO - Portable Receive 442.600 PL 123.0

South County ARES

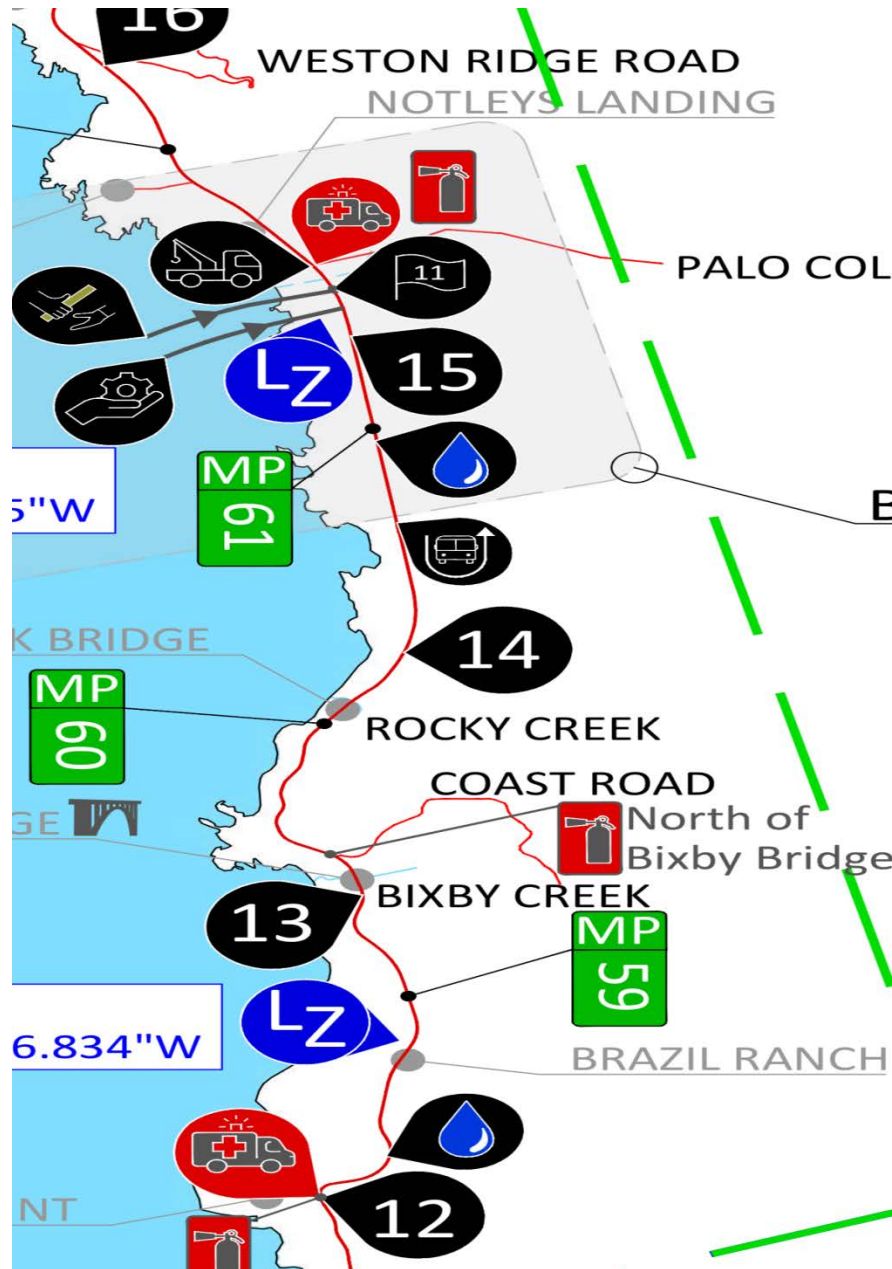


# Command Center (Carmel Mission Inn) SR1 and Rio Road

South County ARES



South County ARES



# SR 1 mile 61, Monterey Co Aid Station 6, Robert & Madeline

South County ARES





# Marathon Day – 4-26-26

- **Operators need to be south of Rio Road by 0530am.**
- CHP will close South Bound Highway 1 at Rio Road at 0650hrs; South of Otter Cove the road is closed starting at 0400hrs, volunteers must have a **“South Bound Vehicle Pass”** (these will be issued at time of check-in) to get South of Otter Cove.
- Operators will need to be at position no later than 0600hrs ready to operate.
- Net Control will come up on the radio around 0530AM.
- The Marathon race starts at 0645hrs; the race is expected to end around 1300hrs.

# Student Nurses Carlo & Allen

South County ARES



South County ARES



# Aid Station 6 Team

Fleet Numerical Meteorology and Oceanography Center



2026 BIG SUR MARATHON - FNMOC AID STATION

South County ARES



South County ARES



South County ARES



# Aid 6: Cleaned and Packed

South County ARES



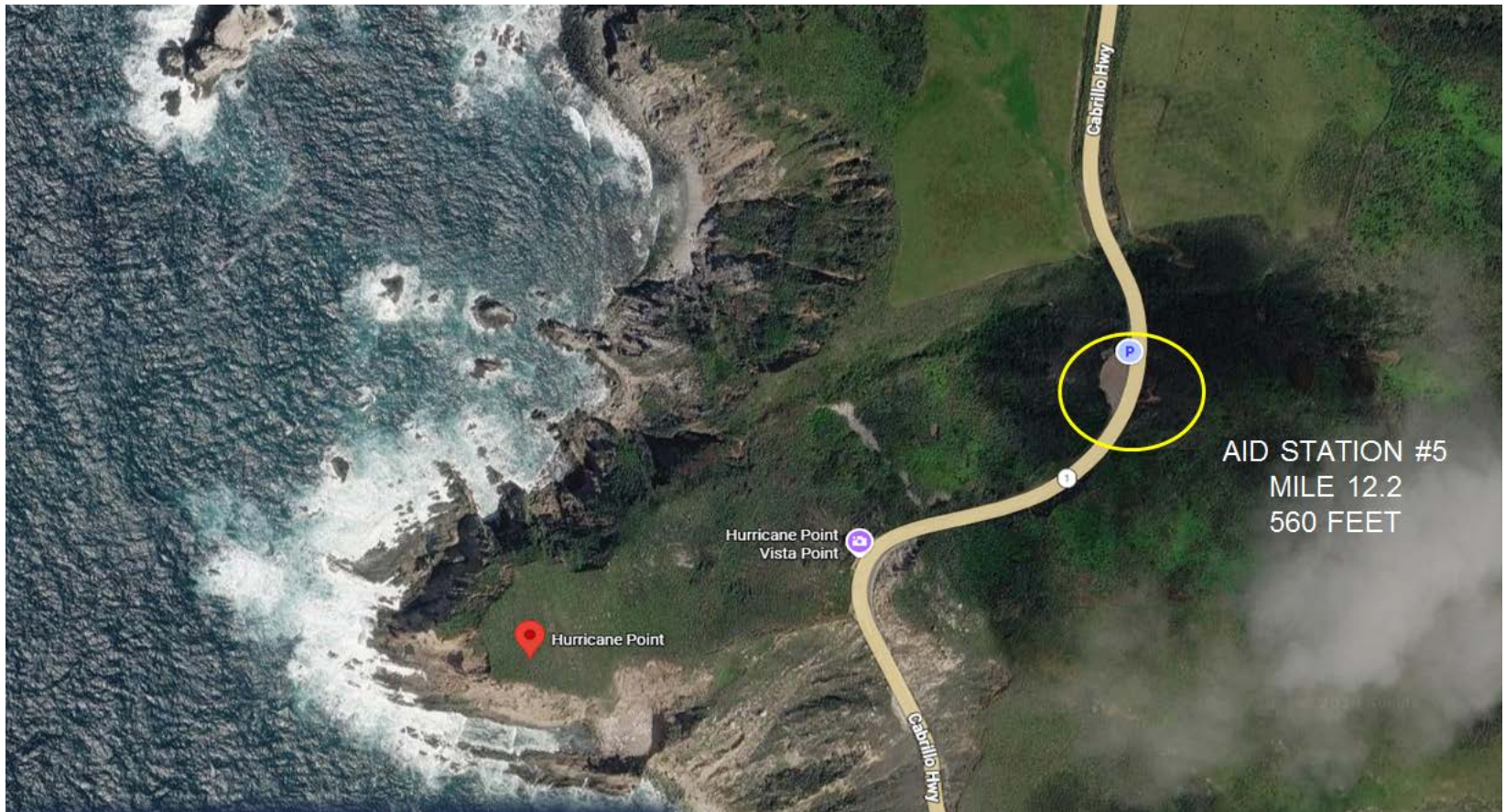


# Aid 6 Overview

- One runner to START via SAG
- One runner w/breathing difficulty SAG'ed
- Starlink mini tested – PW to Aid Station 6
- Good Race communications, antenna on van
- Protect your equipment from rain
- Picnic lunch at Aid 6, not stuck in traffic
- Relatively unevenful station



# Aid Station 5 Mark K6ACY



# Hurricane Point Aid 5

South County ARES



SOUTH VIEW



South County ARES

# Aid 5 North



NORTH VIEW



# Questions

- ?

